



RENAULT without CAN



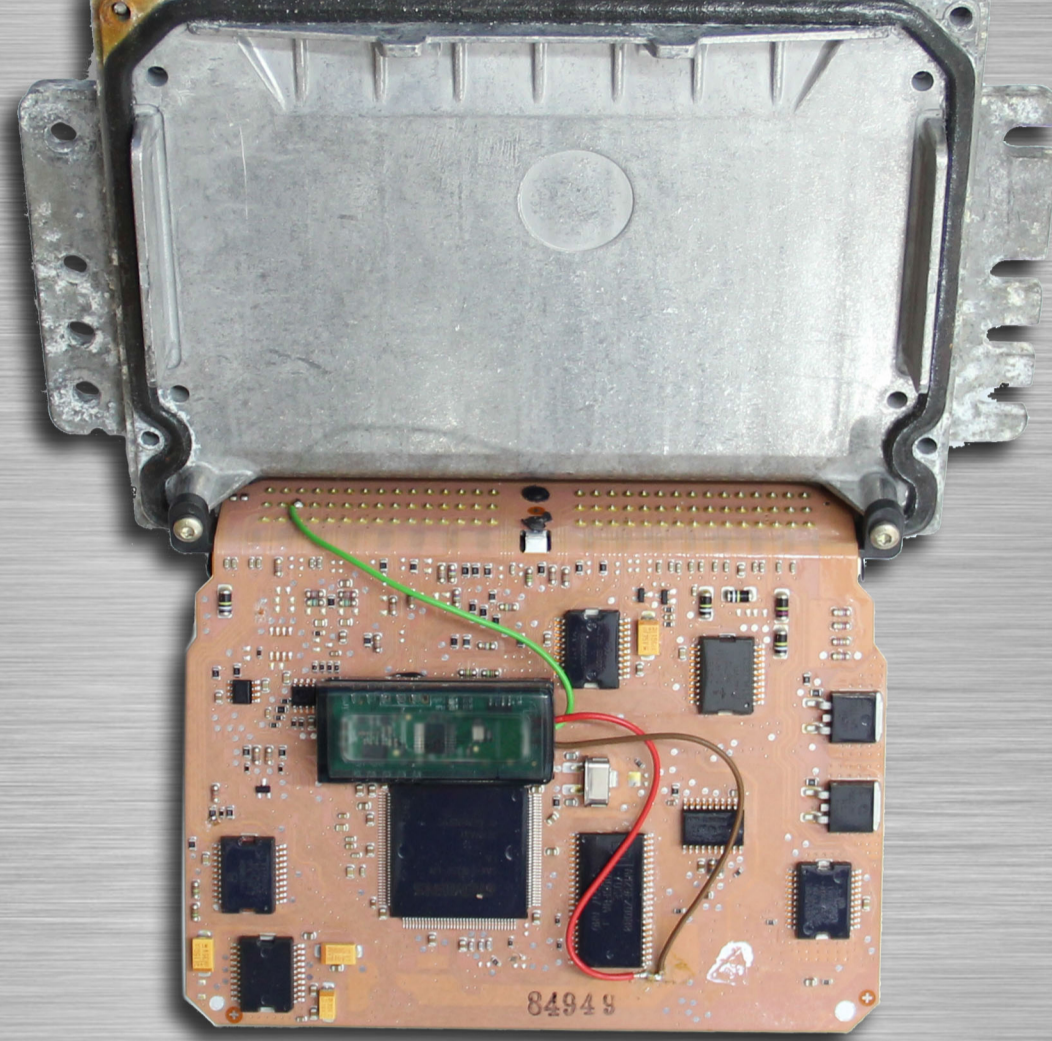
This emulator replaces damaged immo in:

- Sirius 32 without CAN
- 1.9 2.2 and 2.5 DCi without CAN
- 1.9 DTi 1 plug
- 1.9 DTi 2 plugs

SIRIUS 32 without CAN

In the addresses from:
4000 to 7FFF
 find all values
64 C7, 54 D7 or B4 5C
 and change these values,
 and two units before them into:
FF FF FF FF

Repeat it in the whole map
 from **4000 to 7FFF!**

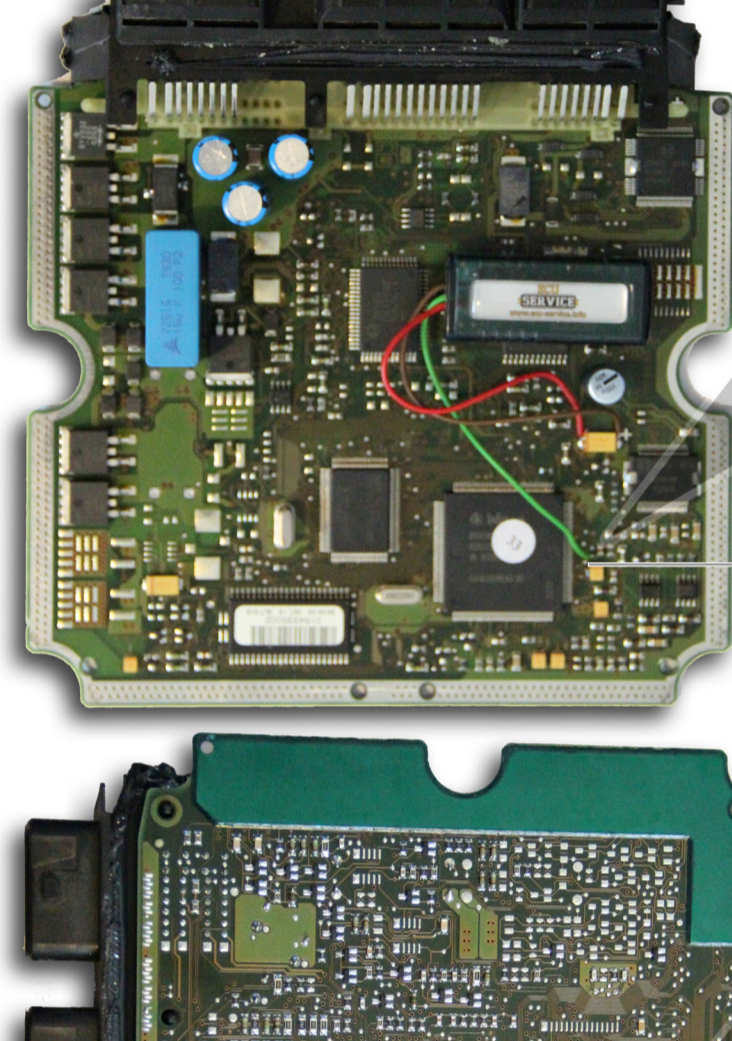


CUT OFF - PIN 58!

1.9 2.2 and 2.5 DCi without CAN

In **5P08C3** memory
 in the addresses:
003E 003F 0040 0041
 and
0044 0045 0046 0047
 change these values into **FF**

The emulator can be used for
 all **1.9, 2.2, 2.5 DCi** when the
 chassis number are not entered
 in **EEPROM** memory



CODE LINE
green wire

EEPROM
5P08C3

UNSOLDER
334 RESISTOR

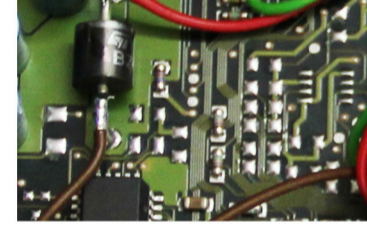
1.9 DTi 1 plug

Connect the immo line of
 emulator to pin **59** of ECU.
 Connect **GND** and **ACC** to
 diode in the ECU.

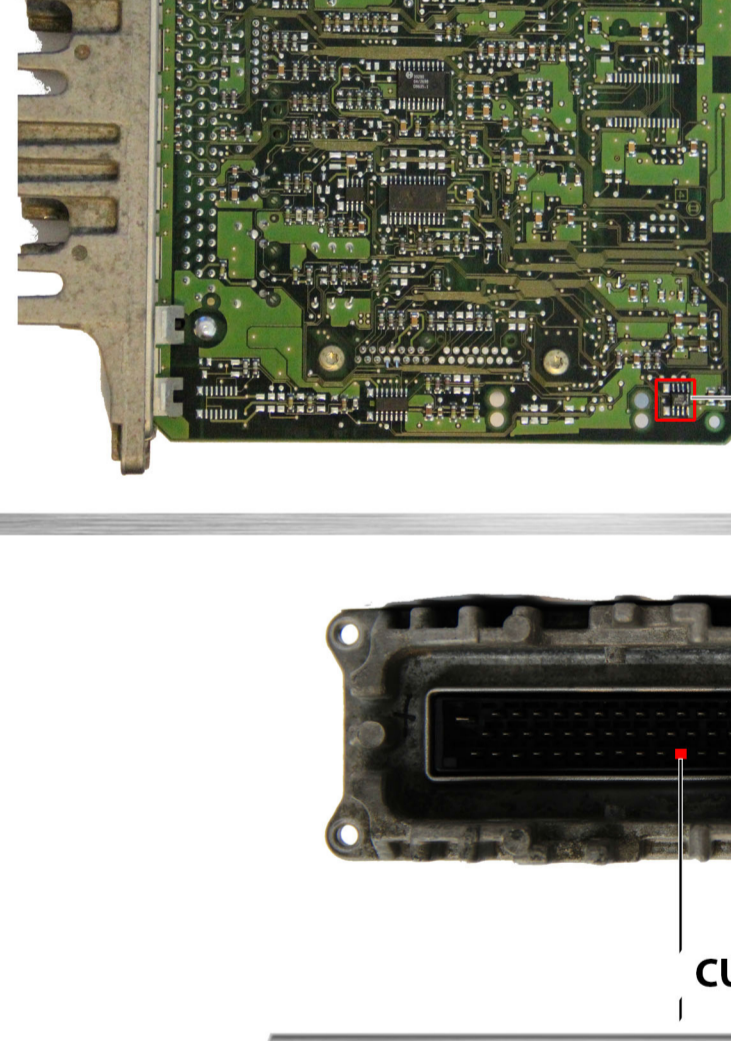
In **24C02** memory in the addresses
3E-41, 54-57 or 3E-41, 56-59
 change these values in to **FF**



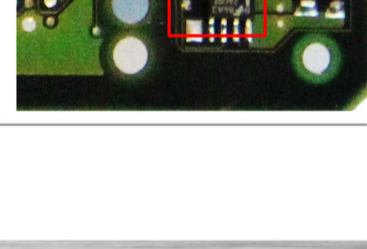
DETAILS



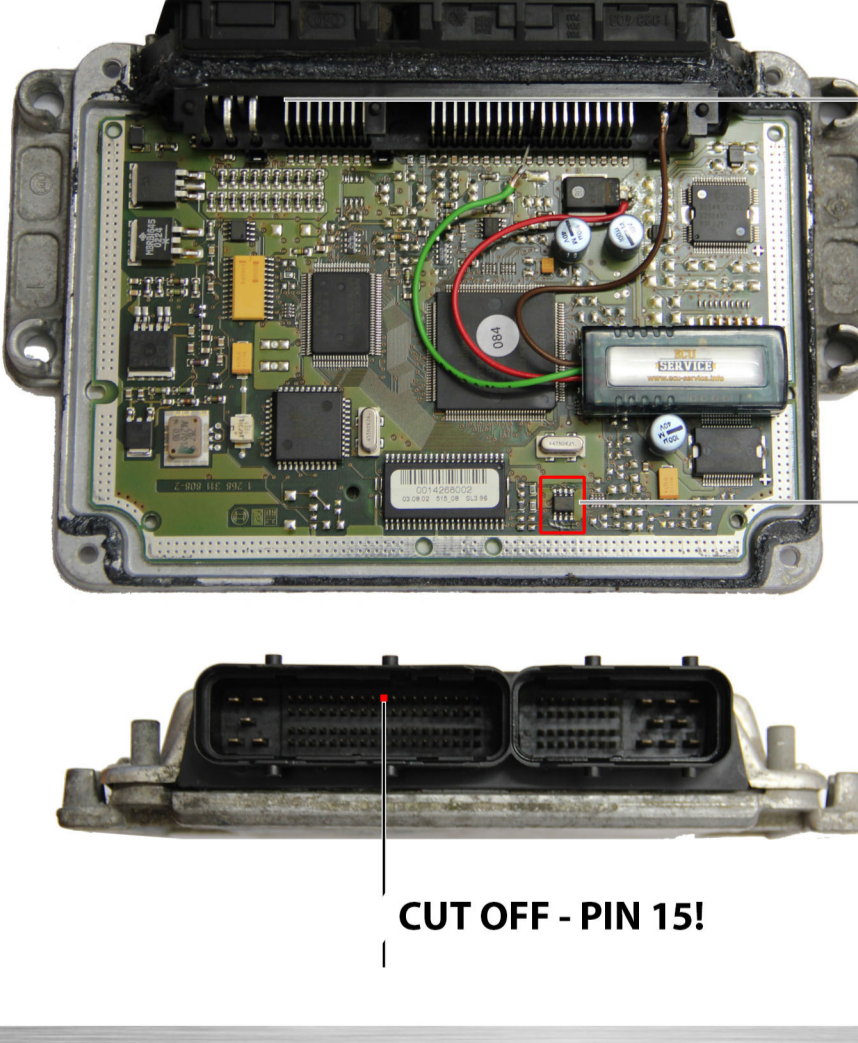
CUT OFF - PIN 59!



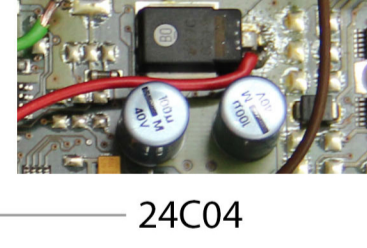
24C02



1.9 DTi 2 plug



DETAILS



24C04

GND	IMMO	12V
4, 5 pin	15 pin	81 pin

CUT OFF 15 pin
from wiring

CUT OFF - PIN 15!

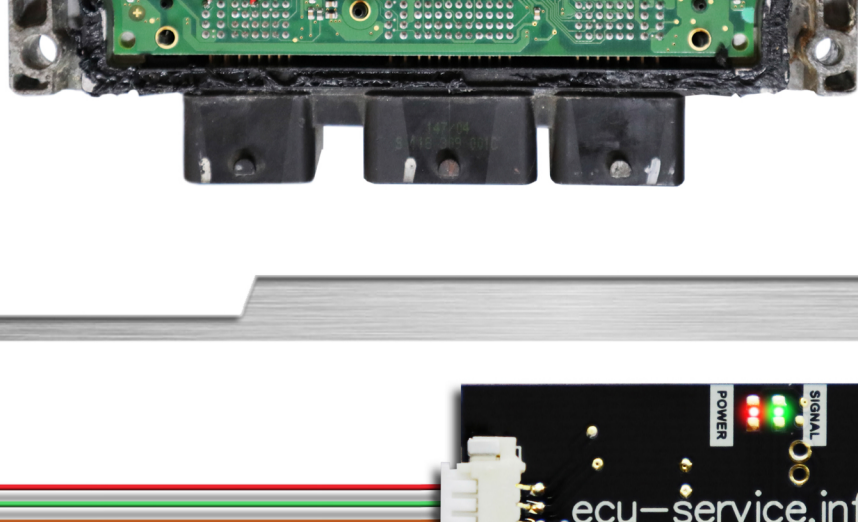
In the addresses from
174 to 177 and
1B7 to 1BA

Change these values into
FF FF FF FF
 in **24C04** memory

Renault SIM 32

From address **3E6** to **3EB**

Change these values into:
00 00 FF FF B1 01



DETAILS

