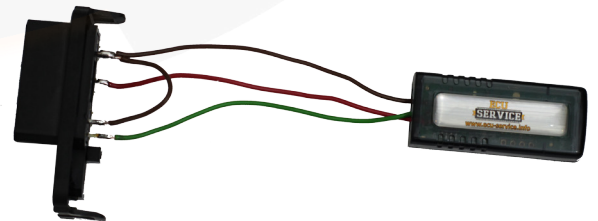
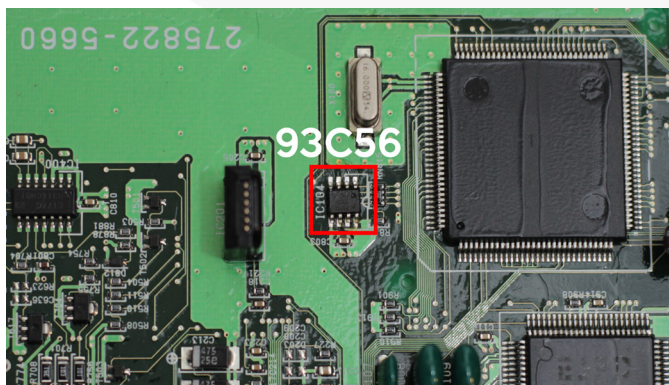
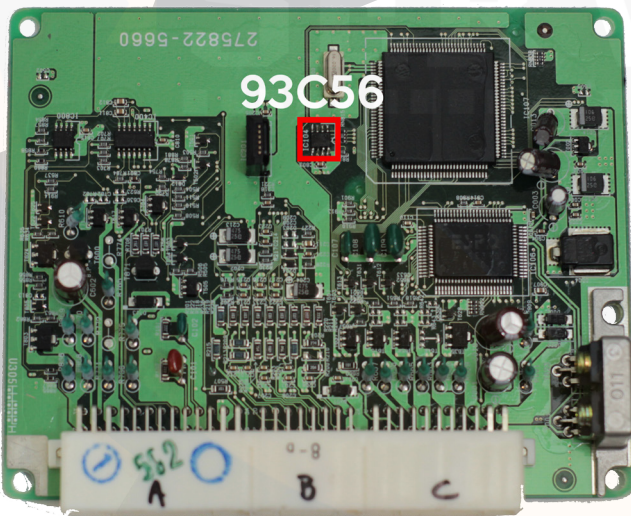
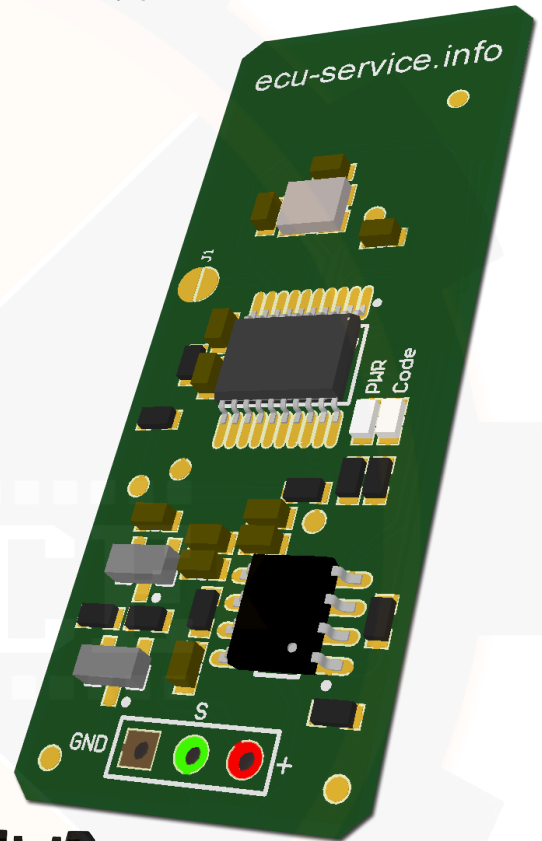




MAZDA 323, 626, PREMACY 2.0 DITD

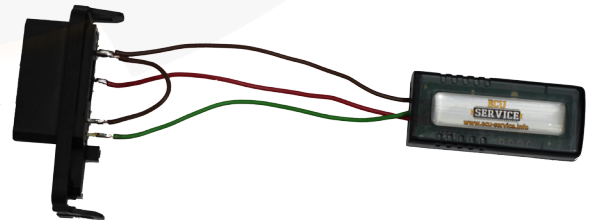
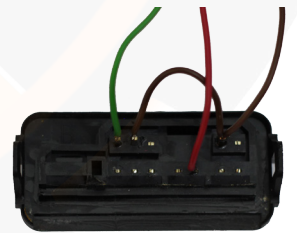
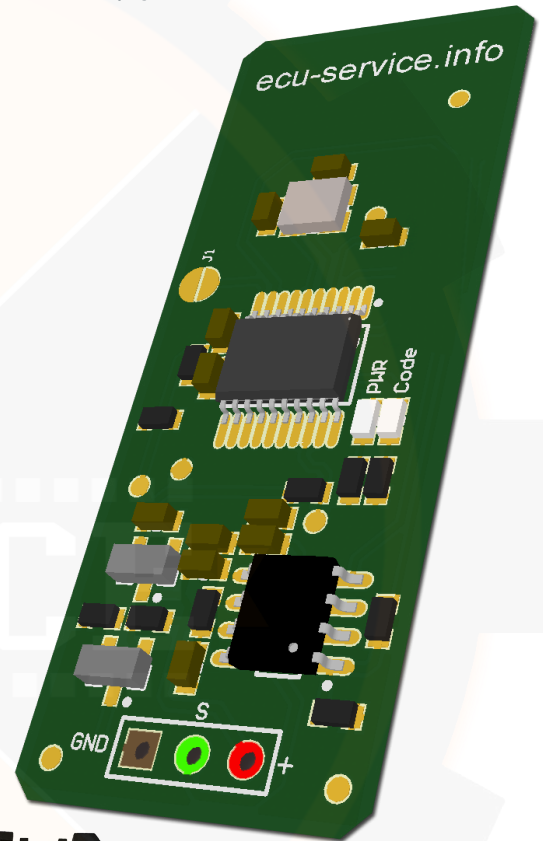
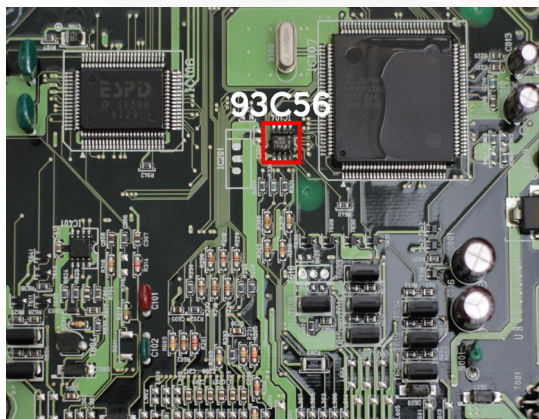
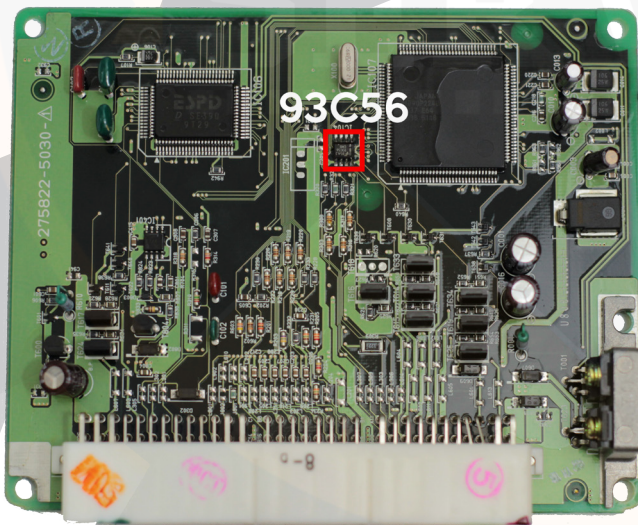


In memory 93C56 perform modifications of address 16 to 19 write value 11 11 11 11.





MAZDA 323, 626, PREMACY 2.0 DITD



In memory 93C56 perform modifications
of address 16 to 19
write value 11 11 11 11.



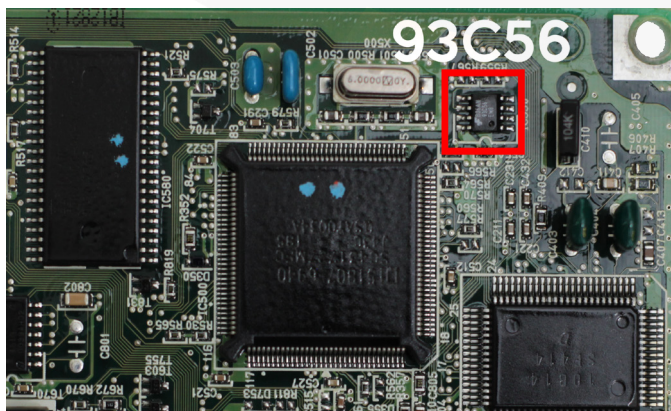
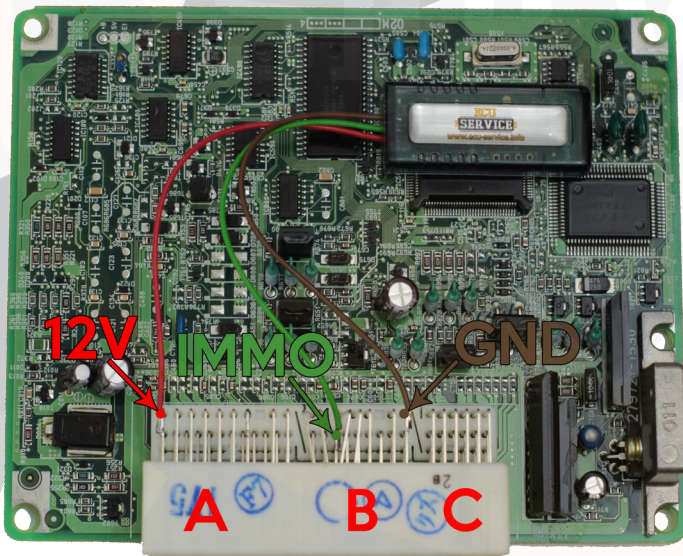
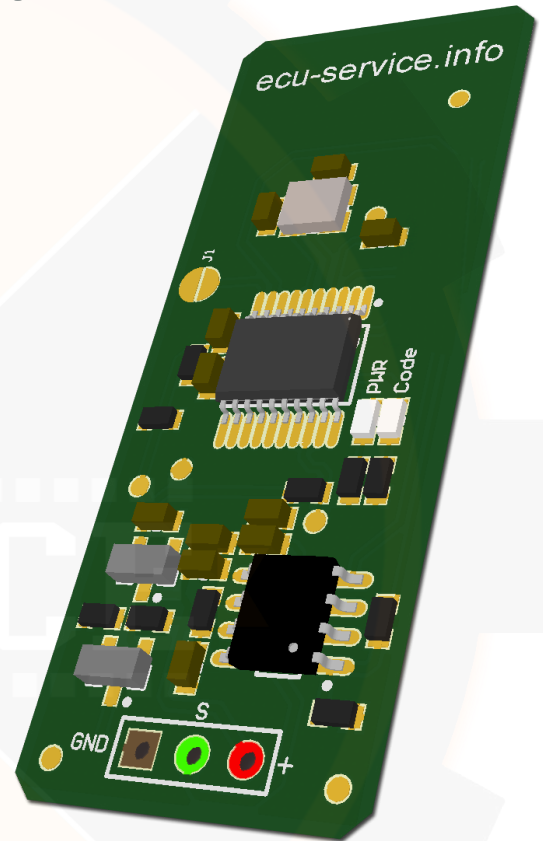
Ecu-Service
ul. 9 Maja 21
66-010 Nowogród Bobrzański
Poland



www.ecu-service.info



MAZDA 1.8 PETROL

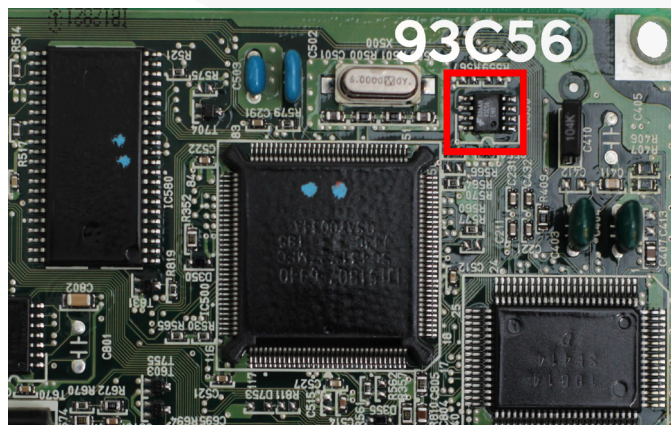
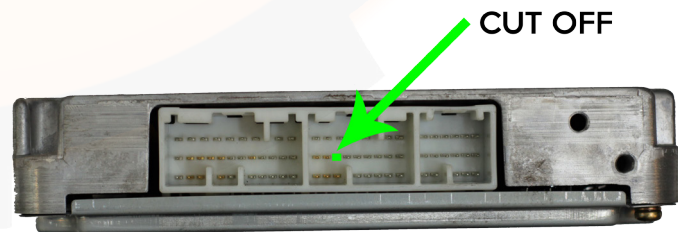
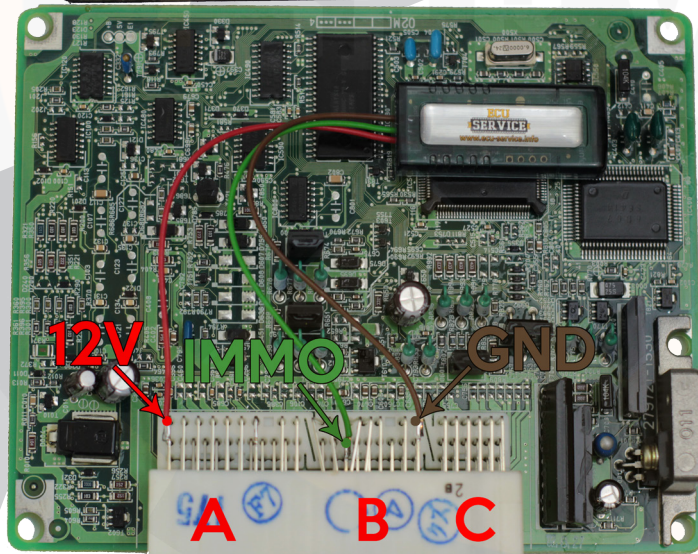
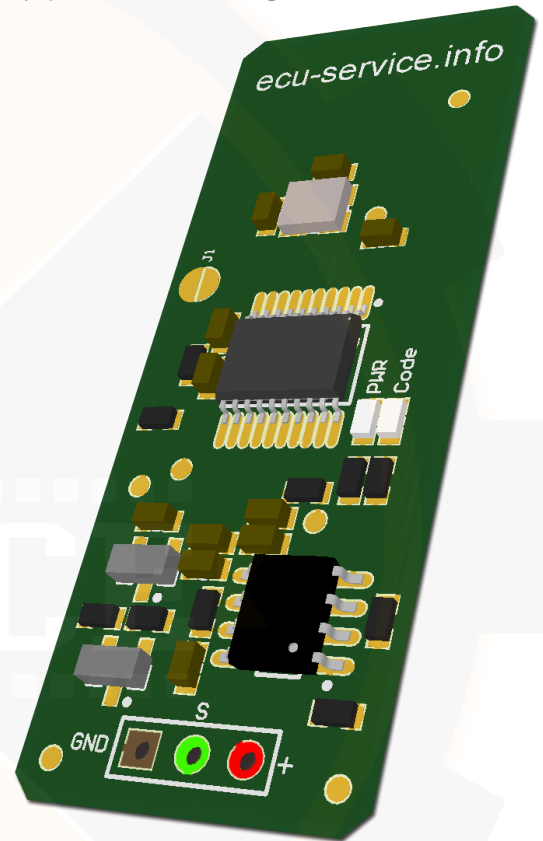


In memmory 93C56 perform modifications of address 17 to 1D write value 11 00 11 00 11 00 11.





MAZDA PREMACY, MPV 2.0 PETROL

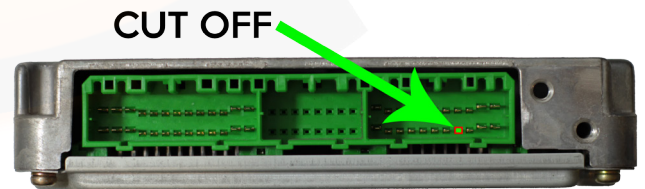
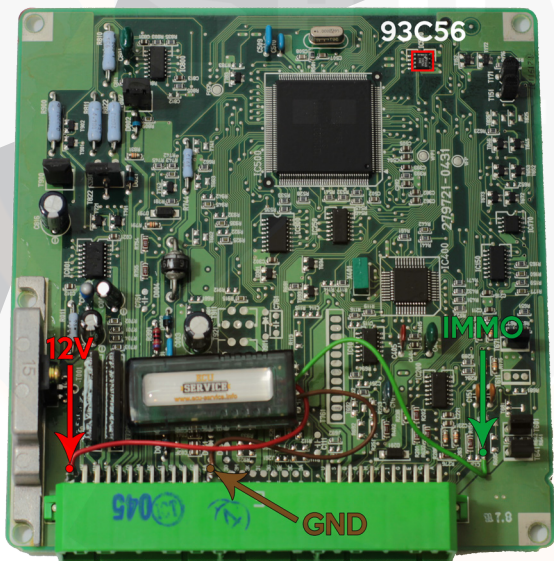
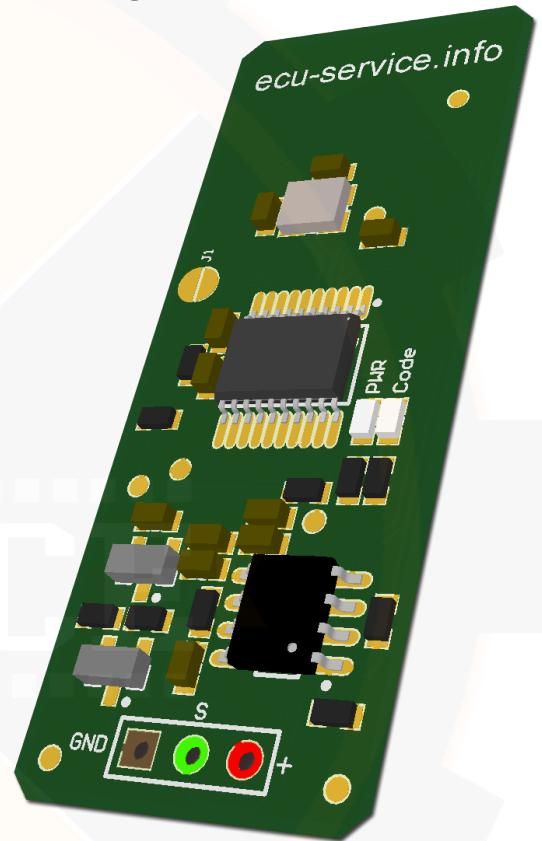


In memory 93C56 perform modifications of address 17 to 1D write value 11 00 11 00 11 00 11.





MAZDA DEMIO 1.3 PETROL

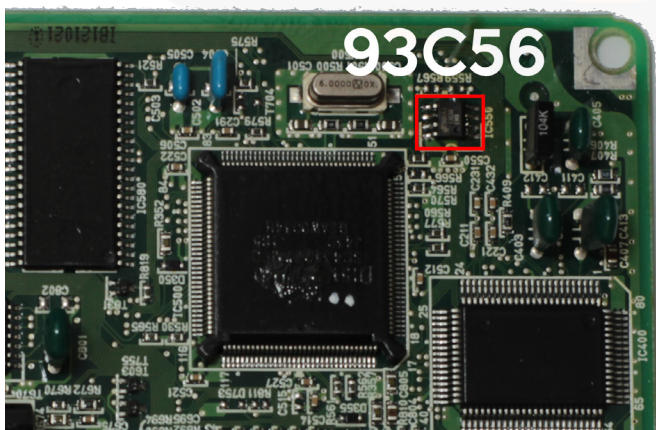
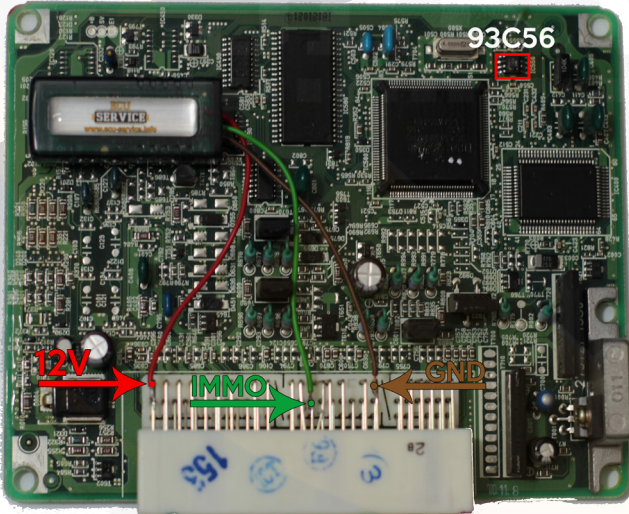
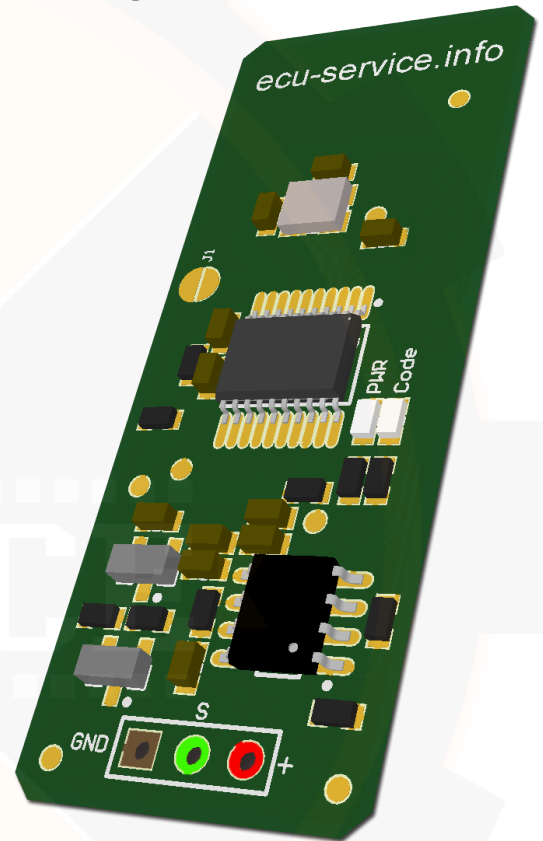


In memory 93C56 perform modifications of address 17 to 1D write value 11 00 11 00 11 00 11.





MAZDA DEMIO 1.3 PETROL



In memory 93C56 perform modifications
of address 17 to 1D
write value 11 00 11 00 11 00 11.





EXAMPLES OF CHANGES

ECU
RF4W, RF3F

ECU
FPG6, FPD9, B33N, B35J

```

93c56 org for emu 11 11 11 11.bin
Offset(h) 00 01 02 03 04 05 06 07 08 09 0A 0B 0C 0D 0E 0F
00000000 00 00 5A 00 5A 00 5A 00 00 00 00 00 00 00 00 00 ...Z.Z.Z.Z.....
00000010 00 00 00 00 C6 00 11 11 11 11 72 00 AA 23 55 9A ...C. x. s#U$
00000020 B4 00 AA 26 55 9A 00 00 00 00 00 00 00 00 00 00 ...s&U$.....
00000030 00 00 00 00 00 00 00 00 00 00 00 00 00 00 00 00 .....
00000040 00 00 00 00 00 00 00 00 00 00 00 00 00 00 00 00 .....
00000050 00 00 00 00 00 00 00 00 00 00 00 00 00 00 00 00 .....
00000060 00 00 00 00 00 00 00 00 00 00 00 00 00 00 00 00 .....
00000070 00 00 00 00 00 00 00 00 00 00 00 00 00 00 00 00 .....
00000080 00 00 00 00 00 00 00 00 00 00 00 00 00 00 00 00 .....
00000090 00 00 00 00 00 00 00 00 00 00 00 00 00 00 00 00 .....
000000A0 00 00 00 00 00 00 00 00 00 00 00 00 00 00 00 00 .....
000000B0 00 00 00 00 00 00 00 00 00 00 00 00 00 00 00 00 .....
000000C0 00 00 00 00 00 00 00 00 00 00 00 00 00 00 00 00 .....
000000D0 00 00 00 00 00 00 00 00 00 00 00 00 00 00 00 00 .....
000000E0 84 1C 0B 00 00 00 00 00 00 00 00 00 00 00 00 ...
000000F0 00 00 00 00 00 00 00 00 00 00 00 00 00 00 00 00 .....
  
```

FOR EMULATOR

```

D 93c56 org for emu.bin
Offset(h) 00 01 02 03 04 05 06 07 08 09 0A 0B 0C 0D 0E 0F
00000000 00 00 00 5A 00 5A 00 5A 00 5A 00 00 00 00 00 00 ...Z.Z.Z.Z.....
00000010 00 00 00 00 00 4B 00 11 00 11 00 11 00 11 00 0F ...K.....
00000020 00 00 00 06 00 55 00 7D 00 0F 00 00 00 06 00 49 ...U.....I
00000030 00 A3 00 0F 00 00 00 06 00 4A 00 A7 00 00 00 00 ...E.....J.S...
00000040 00 00 00 00 00 00 00 00 00 00 00 00 00 00 00 00 .....
00000050 00 00 00 00 00 00 00 00 00 00 00 00 00 00 00 00 .....
00000060 00 00 00 00 00 00 00 00 00 00 00 00 00 00 00 00 .....
00000070 00 00 00 00 00 00 00 00 00 00 00 00 00 00 00 00 .....
00000080 00 00 00 00 00 00 00 00 00 00 00 00 00 00 00 00 .....
00000090 00 00 00 00 00 00 00 00 00 00 00 00 00 00 00 00 .....
000000A0 00 00 00 00 00 00 00 00 00 00 00 00 00 00 00 00 .....
000000B0 00 00 00 00 00 00 00 00 00 00 00 00 00 00 00 00 .....
000000C0 00 00 00 00 00 00 00 00 00 00 00 00 00 00 00 00 .....
000000D0 00 00 00 00 00 00 00 00 00 00 00 00 00 00 00 00 .....
000000E0 00 00 00 00 00 00 00 00 00 00 00 00 00 00 00 00 .....
000000F0 00 00 00 00 00 00 00 00 00 00 00 00 00 00 00 00 .....
  
```

FOR EMULATOR

```

93c56 org.bin
Offset(h) 00 01 02 03 04 05 06 07 08 09 0A 0B 0C 0D 0E 0F
00000000 00 00 5A 00 5A 00 5A 00 00 00 00 00 00 00 00 00 ...Z.Z.Z.Z.....
00000010 00 00 00 00 C6 00 22 19 78 13 72 00 AA 23 55 9A ...C. x. s#U$
00000020 B4 00 AA 26 55 9A 00 00 00 00 00 00 00 00 00 00 ...s&U$.....
00000030 00 00 00 00 00 00 00 00 00 00 00 00 00 00 00 00 .....
00000040 00 00 00 00 00 00 00 00 00 00 00 00 00 00 00 00 .....
00000050 00 00 00 00 00 00 00 00 00 00 00 00 00 00 00 00 .....
00000060 00 00 00 00 00 00 00 00 00 00 00 00 00 00 00 00 .....
00000070 00 00 00 00 00 00 00 00 00 00 00 00 00 00 00 00 .....
00000080 00 00 00 00 00 00 00 00 00 00 00 00 00 00 00 00 .....
00000090 00 00 00 00 00 00 00 00 00 00 00 00 00 00 00 00 .....
000000A0 00 00 00 00 00 00 00 00 00 00 00 00 00 00 00 00 .....
000000B0 00 00 00 00 00 00 00 00 00 00 00 00 00 00 00 00 .....
000000C0 00 00 00 00 00 00 00 00 00 00 00 00 00 00 00 00 .....
000000D0 00 00 00 00 00 00 00 00 00 00 00 00 00 00 00 00 .....
000000E0 84 1C 0B 00 00 00 00 00 00 00 00 00 00 00 00 ...
000000F0 00 00 00 00 00 00 00 00 00 00 00 00 00 00 00 00 .....
  
```

ORIGINAL FILE

```

93c56 org.bin
Offset(h) 00 01 02 03 04 05 06 07 08 09 0A 0B 0C 0D 0E 0F
00000000 00 00 00 5A 00 5A 00 5A 00 5A 00 00 00 00 00 00 ...Z.Z.Z.Z.....
00000010 00 00 00 00 00 4B 00 16 00 81 00 73 00 41 00 0F ...K.....A..
00000020 00 00 00 06 00 55 00 7D 00 0F 00 00 00 06 00 49 ...U.....I
00000030 00 A3 00 0F 00 00 00 06 00 4A 00 A7 00 00 00 00 ...E.....J.S...
00000040 00 00 00 00 00 00 00 00 00 00 00 00 00 00 00 00 .....
00000050 00 00 00 00 00 00 00 00 00 00 00 00 00 00 00 00 .....
00000060 00 00 00 00 00 00 00 00 00 00 00 00 00 00 00 00 .....
00000070 00 00 00 00 00 00 00 00 00 00 00 00 00 00 00 00 .....
00000080 00 00 00 00 00 00 00 00 00 00 00 00 00 00 00 00 .....
00000090 00 00 00 00 00 00 00 00 00 00 00 00 00 00 00 00 .....
000000A0 00 00 00 00 00 00 00 00 00 00 00 00 00 00 00 00 .....
000000B0 00 00 00 00 00 00 00 00 00 00 00 00 00 00 00 00 .....
000000C0 00 00 00 00 00 00 00 00 00 00 00 00 00 00 00 00 .....
000000D0 00 00 00 00 00 00 00 00 00 00 00 00 00 00 00 00 .....
000000E0 00 00 00 00 00 00 00 00 00 00 00 00 00 00 00 00 .....
000000F0 00 00 00 00 00 00 00 00 00 00 00 00 00 00 00 00 .....
  
```

ORIGINAL FILE

Offset: 16 Block: 16-19 Length: 4 Overwrite

Offset: 17 Block: 17-1D Length: 7 Overwrite